

The ALPINE

3 Beds • 2.5 Baths • 2 Garage Bays • 1,751 fsf



Elevation A - Craftsman



Elevation B - Colonial

FEATURES:

- Open Floor Plan
- Covered Porch
- Patio
- Mud Room
- Kitchen with Oversized Island
- Walk-In Pantry
- Spacious Great Room
- Three Bedrooms Up
- Convenient Upper-Level Laundry
- Master Suite with Large Bath and Walk-In Closet

AVAILABLE OPTIONS INCLUDE:

- Extended Garage
- Mud Room Bench & Cubbies or Desk
- Gas Fireplace with Built-In Cabinets
- Tray Vault in Master Bedroom
- Barn Door at Master Bath
- Deluxe Shower Master Bath
- Laundry Tub and Cabinets
- Sidelight

Ask your Sales Consultant to see more exterior color options!

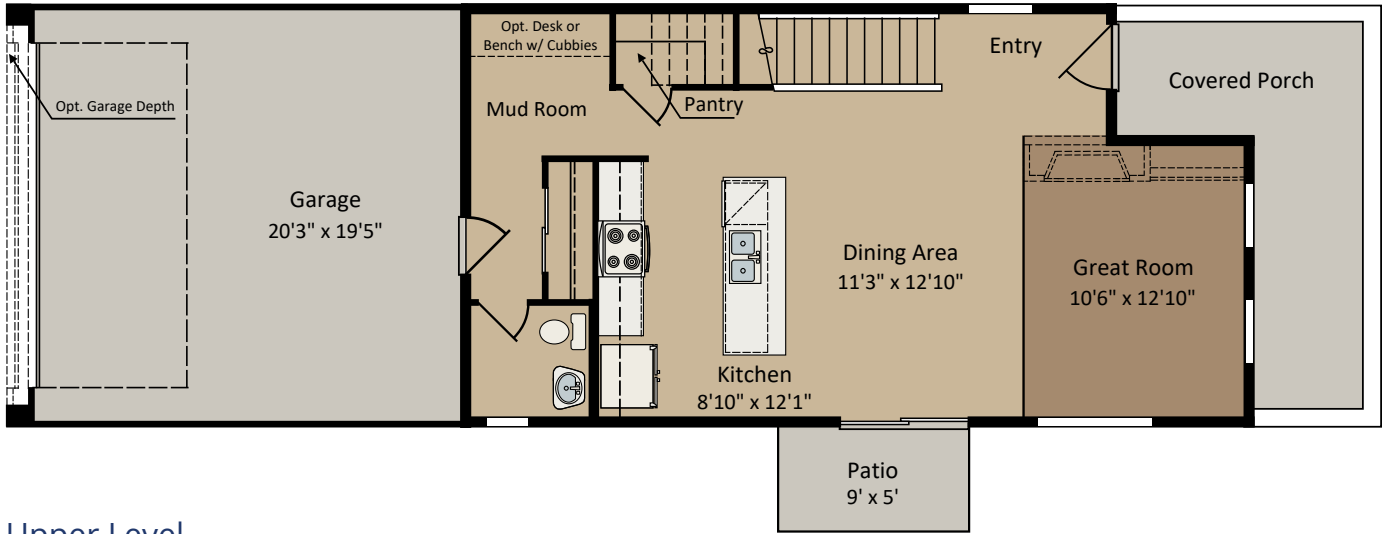
CENTRA HOMES_{LLC}

CentraHomes.com

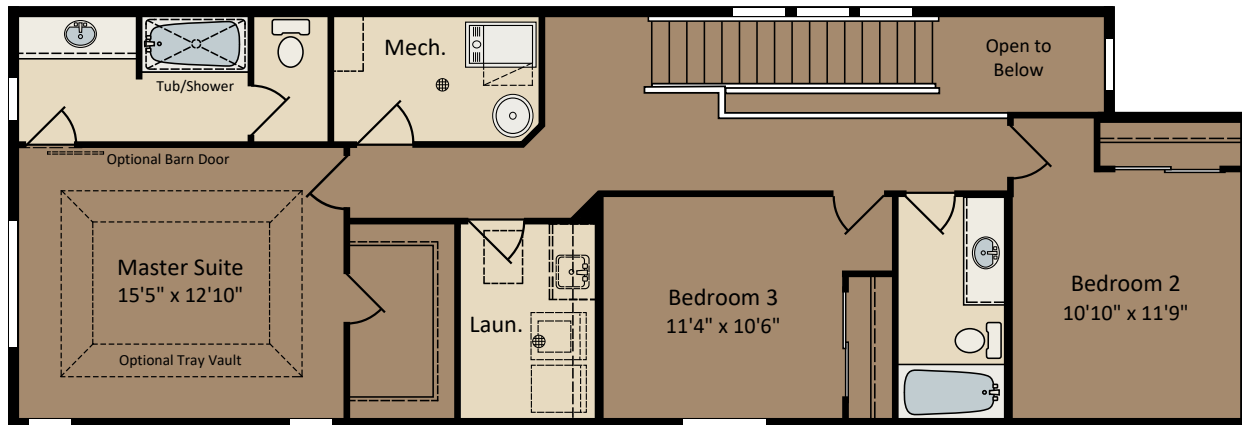
The ALPINE

3 Beds • 2.5 Baths • 2 Garage Bays • 1,751 fsf

Main Level



Upper Level



Optional Deluxe Shower
Optional Double Bowl Vanity

