

Two-Story Home in Port Riverwalk

The BRIGHTWOOD

3 Beds • 2.5 Baths • 2 Garage Bays • 1,777 fsf



Elevation A - Farmhouse

FEATURES:

Covered Porch with Entry Closet
Primary Suite with Large Walk-in Closet
Convenient Upper-Level Laundry

AVAILABLE OPTIONS INCLUDE:

Extended Patio/Covered Patio
Gas Fireplace
Tray Vault in Primary Bedroom
Barn Door at Primary Bath
Primary Bath Shower with Tile Surround
Laundry Cabinet and Sink
Stone Accents Across Front of Home



Elevation B - Craftsman



Elevation C - Prairie

Ask your Sales Consultant to see more exterior color options!

CENTRA HOMES_{LLC}

CentraHomes.com

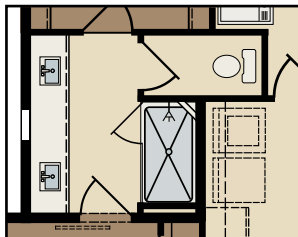
The BRIGHTWOOD

3 Beds • 2.5 Baths • 2 Garage Bays • 1,777 fsf

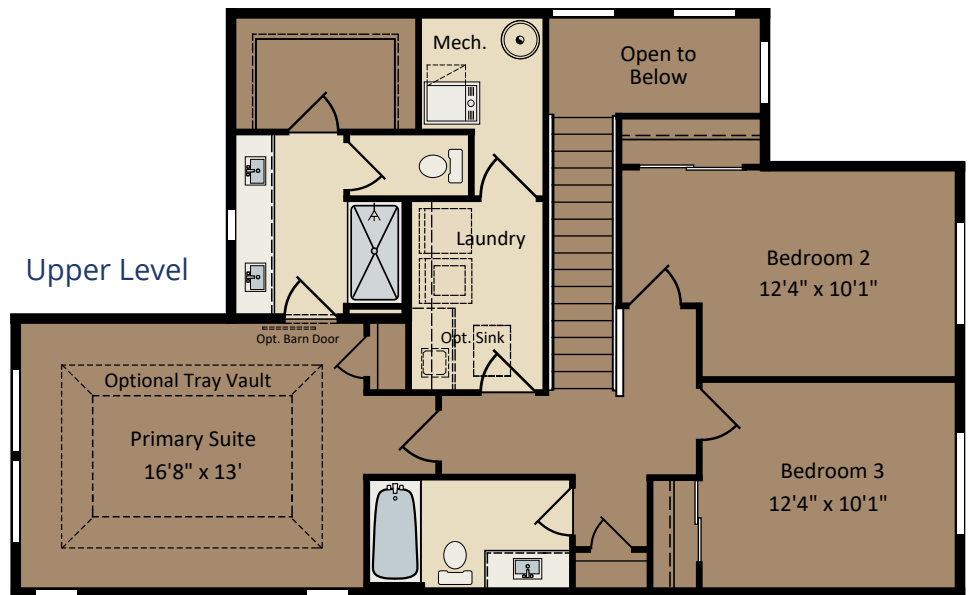
Prairie floor plan shown; covered porch, window placement and fsf may vary per elevation.



Optional Primary Bath Shower with Tile Surround



Upper Level



CENTRA HOMES LLC

CentraHomes.com



Seller reserves the right to make changes or modifications to plans, maps, specifications, materials, features and colors without notice. Prices are subject to changes without notice. Maps, plans and landscaping and elevation renderings are artist's concepts, are not to scale and may not accurately depict the homes or home sites as they are built. These illustrations may depict options and features that are not standard on all homes. Optional features may be included at additional cost and are subject to construction schedule deadlines. All references to square footage are approximate and may vary with elevations. Dimensions and square footage calculations are made using architectural measurements. Home site fencing and walls may not be included in the purchase, and if included, will vary according to the size and location of the home site. Exterior treatments, window locations and room configurations may vary with elevation. Model interior decorating, landscaping, fencing and other amenities are for display purposes only. Please ask Sales Counselor for complete details. Copyright 2021. Centra Homes, LLC. MN Builder License #BC638832. Effective 5/15/21. Equal Housing Opportunity.