

Court Style Home in Port Riverwalk

The STONERIDGE

3 – 4 Beds • 2.5 Baths • 2 Garage Bays • 2,168 fsf



Elevation A - Farmhouse

- FEATURES:**
- Island Kitchen and Pantry
 - Primary Suite with Large Walk-in Closet
 - Loft
- AVAILABLE OPTIONS INCLUDE:**
- Extended Patio/Covered Patio
 - Mud Room Bench & Cubbies
 - French Doors at Study
 - Gas Fireplace with Built-In Cabinets
 - Fourth Bedroom in Lieu of Loft
 - Tray Vault in Primary Bedroom
 - Barn Door at Primary Bath
 - Deluxe Primary Bath
 - Stone Accents Across Front of Home



Elevation B - Craftsman



Elevation C - Colonial

Ask your Sales Consultant to see more exterior color options!

CENTRA HOMES LLC

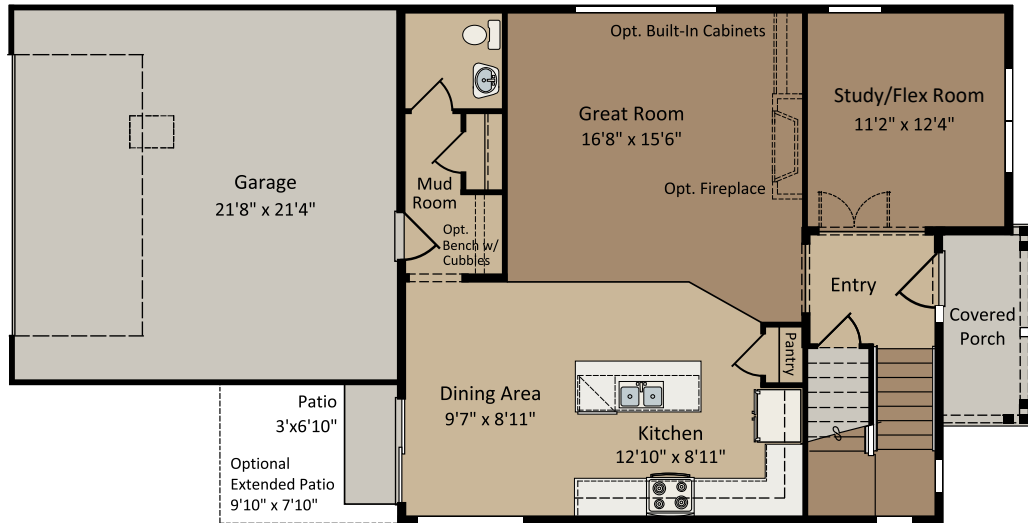
CentraHomes.com

The STONERIDGE

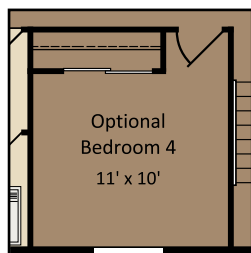
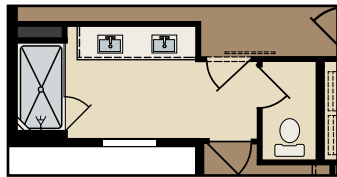
3 – 4 Beds • 2.5 Baths • 2 Garage Bays • 2,168 fsf

Farmhouse floor plan shown; covered porch, window placement and fsf may vary per elevation.

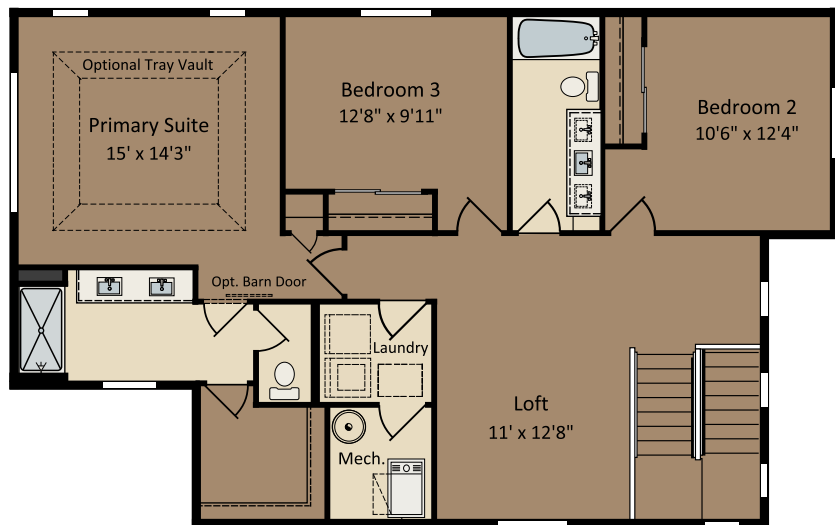
Main Level



Optional Primary Bath Shower with Tile Surround



Optional Bedroom in Lieu of Flex Room



Upper Level

