

Two-Story Home in Foxtail Meadows

The WELLFLEET 2575

3 – 6 Beds • 2.5 – 4 Baths • 3+ – 4+ Garage Bays • 2,575 – 3,594



Elevation A - Farmhouse



Elevation B - Cottage



Elevation C - Prairie

FEATURES:

Main Level Study and Flex Room
Three-Car Garage
Loft
Double Vanities in Master Bath

AVAILABLE OPTIONS INCLUDE:

Deck/Covered Deck
Extended Patio/Covered Extended Patio
Mud Room Bench & Cubbies or Drop Zone
Main Level Bedroom 4 with Full Bath
in Lieu of Study with Half Bath
Gas Fireplace with Built-In Cabinets
Gourmet Kitchen
Fourth Garage Bay
Box Vault in Master Bedroom
Barn Door at Master Bath
Deluxe or Walk-in Shower Master Bath
Upper Level Bedroom 5 in Lieu of Loft
Finished Lower Level
Wet Bar in Finished Lower Level
Exercise Area in Finished Lower Level
Stone Accents Across Front of Home

Ask your Sales Consultant to see more exterior color options!

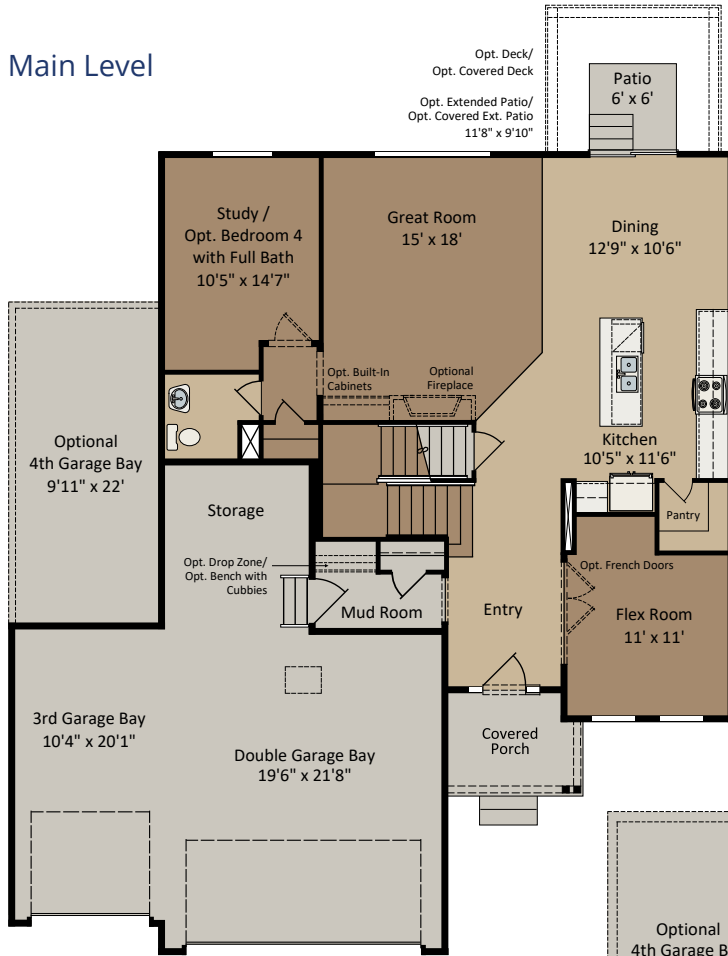
CENTRA HOMES_{LLC}

CentraHomes.com

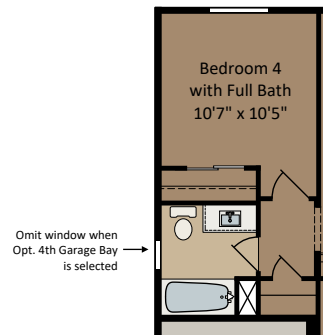
The WELLFLEET 2575

Farmhouse floor plan shown; covered porch, window placement and fsf may vary per elevation.

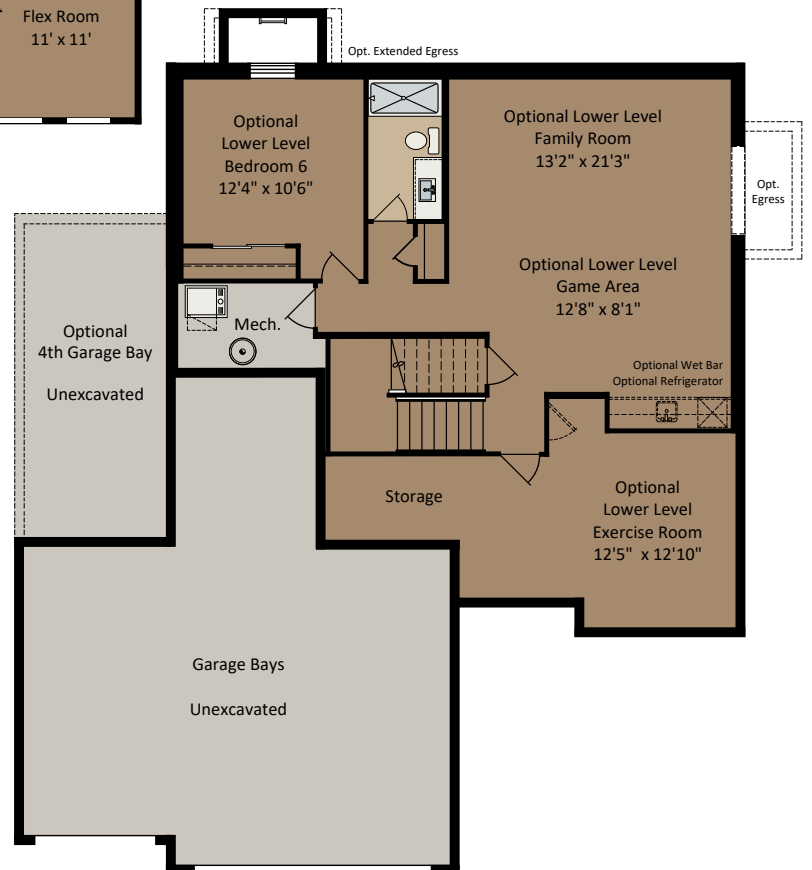
Main Level



Optional Bedroom 4 with Full Bath in Lieu of Study with Half Bath



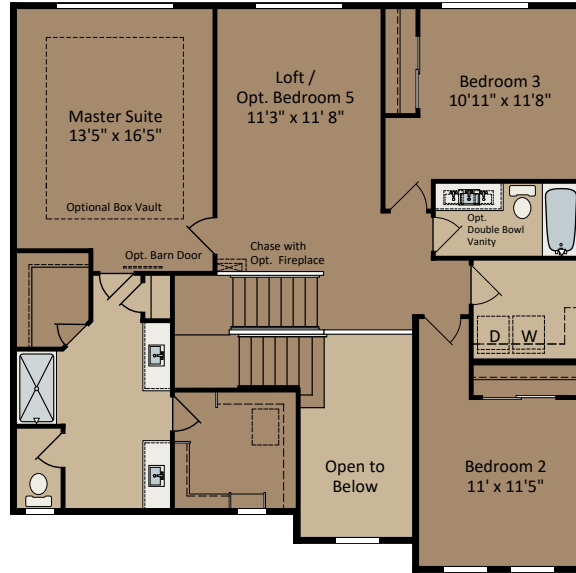
Optional Finished Lower Level



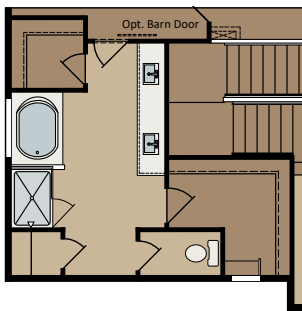
The WELFLEET 2575

Farmhouse floor plan shown; covered porch, window placement and fsf may vary per elevation.

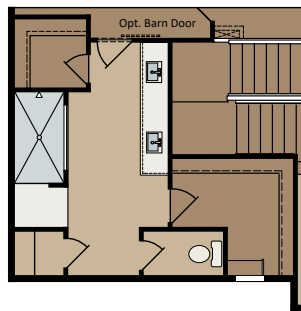
Upper Level



Optional Master Baths

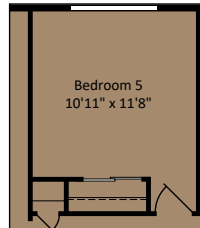


Deluxe



Walk-In Shower

Optional Bedroom 5 in Lieu of Loft



Optional Laundry Cabinets & Sink

